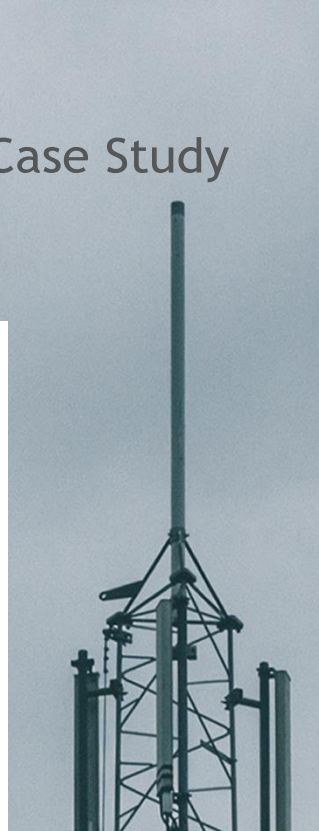


Cornerstone Telecommunications Infrastructure Limited (CTIL) was founded in 2012 as a joint venture between Vodafone and Telefónica to manage the network site for both companies.

CTIL provides the passive network infrastructure (enclosures, steelwork, poles, etc.) that enables the telecoms operators to deploy their networks in the UK.



# 10

Number of Flows

# 13,000

Number of documents processed  
(3 month)

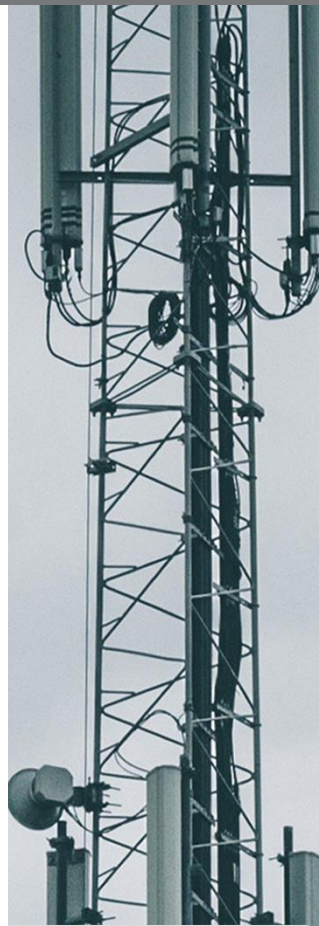


## The Challenge

CTIL's Acquisition Department identifies appropriate location options for cell sites. It then negotiates and manages contracts with the landlords and manages planning applications.

Within the London Acquisition team, CTIL developed a base solution to implement a drawing approval process. This process captured the drawing documents for each cell site location and for each drawing the appropriate department of CTIL (or external company) ascertained whether the drawing was accurate before signing it off.

CTIL's existing system consisted of an Office 365 application using SharePoint document libraries and SharePoint Designer workflows. As the volume of documents rose this solution required an update to increase reliability in the system.



# The Solution



Triad was asked to improve the system. As a Microsoft partner, we had access to Microsoft's Flow Engineering Team and we soon realised that an innovative solution was possible by working with their "Power User Pro Crew" to make something new using Microsoft Flow.

The result is a new system and process which came from migrating the SharePoint Designer solution to Microsoft Flow. Designing innovative low-code Flows permitted Triad to implement a robust system that fully handles all errors that may occur while the documents are processed by the system. The new system that emerged is more reliable, faster and easier to use.



# The Result

Using Flow allowed upgrades of the solution to go through Development, UAT and Production without requiring any substantial down-time to make changes to the process or data structure. This also means that CTIL has a system that is scalable as their business grows.

Using just 10 flows, the system now processes 13,000 documents every three months with more documents being added daily.



Like to know more about Triad's services and the kind of benefits they deliver? Visit [www.computer-technology.com](http://www.computer-technology.com)